

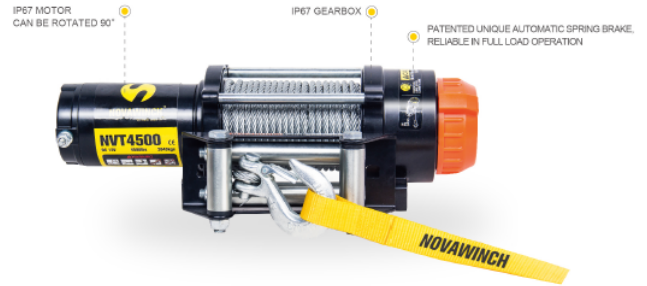
NOTHING CAN GET IN YOUR WAY

The T-series lineup has all the features you want to couple with the durability and reliability you need. With pulling capacities from 2500lb to 4500lb and featuring an all metal chassis, long life, low maintenance rate design, and low noise operation the T-series offers industrial winch performance in a compact package to conquer even the toughest situations.



T SERIES WINCH 4500-2500lbs

Designed for the ATV/UTV sports enthusiast, equipped efficient motor, solid contactor, strong drum good for synthetic rope. Integrate control box version meets various application.



STANDARD 4500

Designed for the ATV/UTV sports
4500lb control includes hand remote assembly and rocker switch



STANDARD 3500

Designed for the ATV/UTV sports
3500lb control includes rocker switch

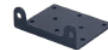


STANDARD 2500

Designed for the ATV/UTV sports
2500lb control includes rocker switch



STANDARD ACCESSORIES



Mounting Plate



4-way Roller Fairlead



Contactor



Cable Assy Kit



Hook

OPTIONAL



The lightest weight style



The most convenient style



The simplest and most affordable style

NVT4500

SPECIFICATIONS:

Rated line pull:

4500lbs(2043kgs)single line

Motor(Series wound):

DC 12V/3.0hp/2.2kW

Gear train:

3 stage planetary gear

Gear ratio: 180:1

Clutch: Sliding ring gear

Braking action:
Mechanical, Automatic load holding

Fairlead: 4-way roller fairlead

Wire ropes: 7/32"×55.8"(Φ5.4mm×1.7m)

Drum size: 1.73"×4.88"(44mm×124mm)

Dimensions:

15.19"×4.44"×4.76"(386mm×113mm×121mm)/

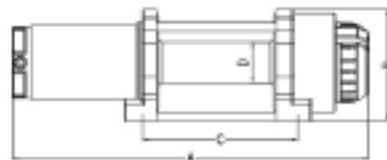
15.67"×4.44"×6.3"(398mm×113mm×160mm)

Bolt pattern: 6.6"×3"(168mm×76.2mm)

Net Weight: 30.6lbs(13.9kgs)

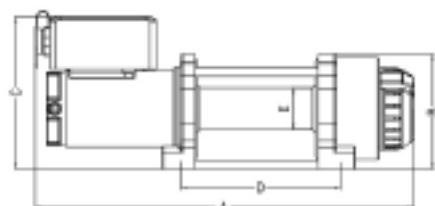
12V DC Line speed and motor current (first layer)

Line pull		Line speed		Motor current
lbs	kgs	FPM	MPM	Amps
0	0	13.1	4.0	30
4500	2043	4.6	1.4	185



A=15.19"(386mm) B=4.76"(121mm)

C=6.6"(168mm) D=Φ1.73"(44mm)



A=15.67"(398mm) B=4.76"(121mm)

C=6.3"(160mm) D=6.6"(168mm)

E=Φ1.73"(44mm)